

Date: 21 August 2023
Enquiries to: Suffolk Highways
Tel: 0345 606 6171
Email: customer.services@suffolk.gov.uk



The Occupier

Dear Resident,

As you may be aware, stage 5 of the Tour of Britain cycle race takes place in Suffolk on Thursday 7th September. The stage will start and finish in Felixstowe and travel 192km through Suffolk, visiting many of the county's towns and villages. Full route details and timings can be found on the [Tour of Britain | Stage Five](#) website page.

To ensure a safe route for the race, riders, and residents it will be necessary to suspend on street parking on the following roads within Debenham:

- Gracechurch Street
- High Street

Please see plan printed overleaf highlighting area affected.

These restrictions will apply between 11:00 and 14:30 on Thursday 7th September, although we will endeavour to remove the cones and lift the restriction as soon as the race has come through, to minimise any inconvenience.

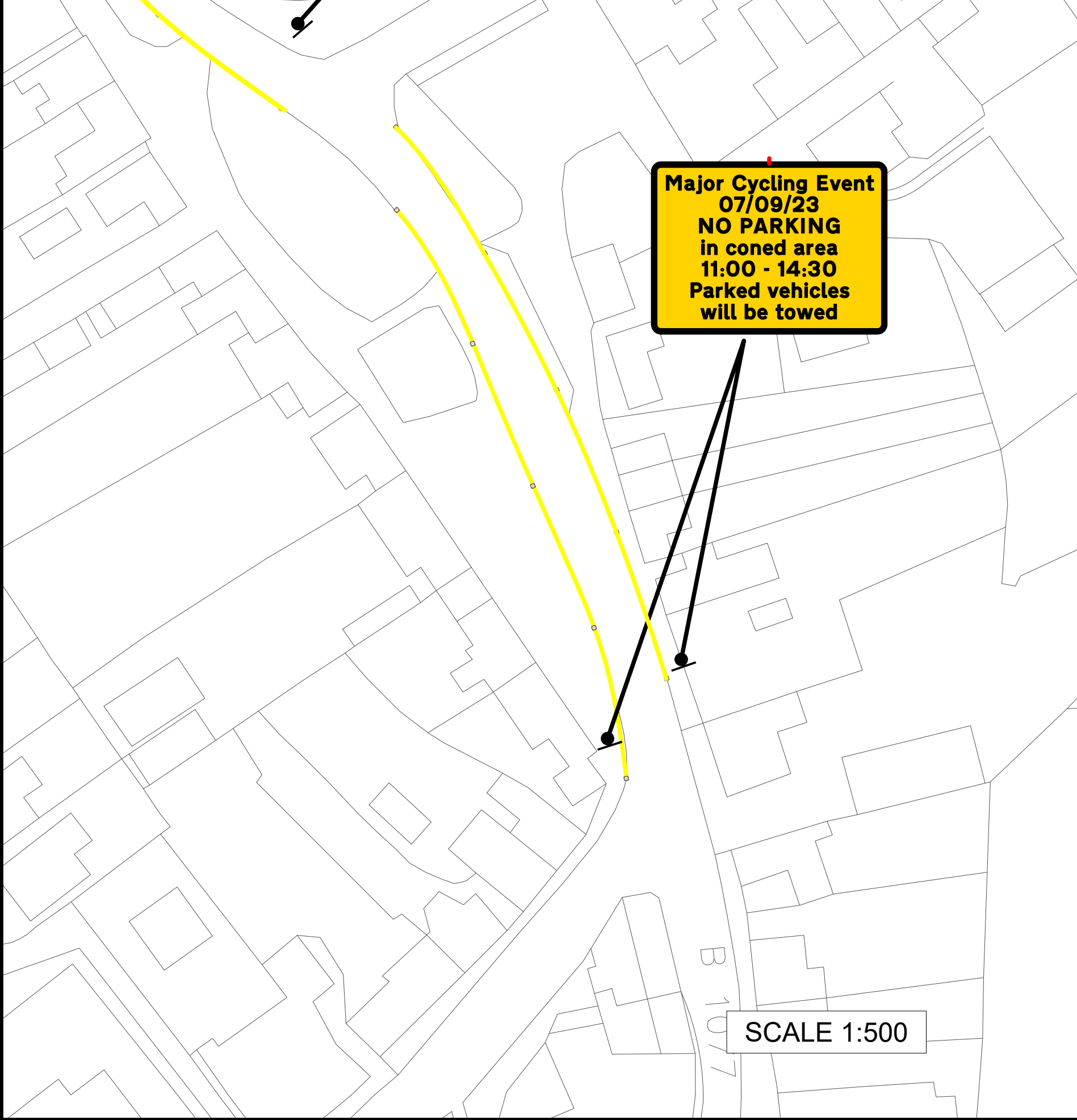
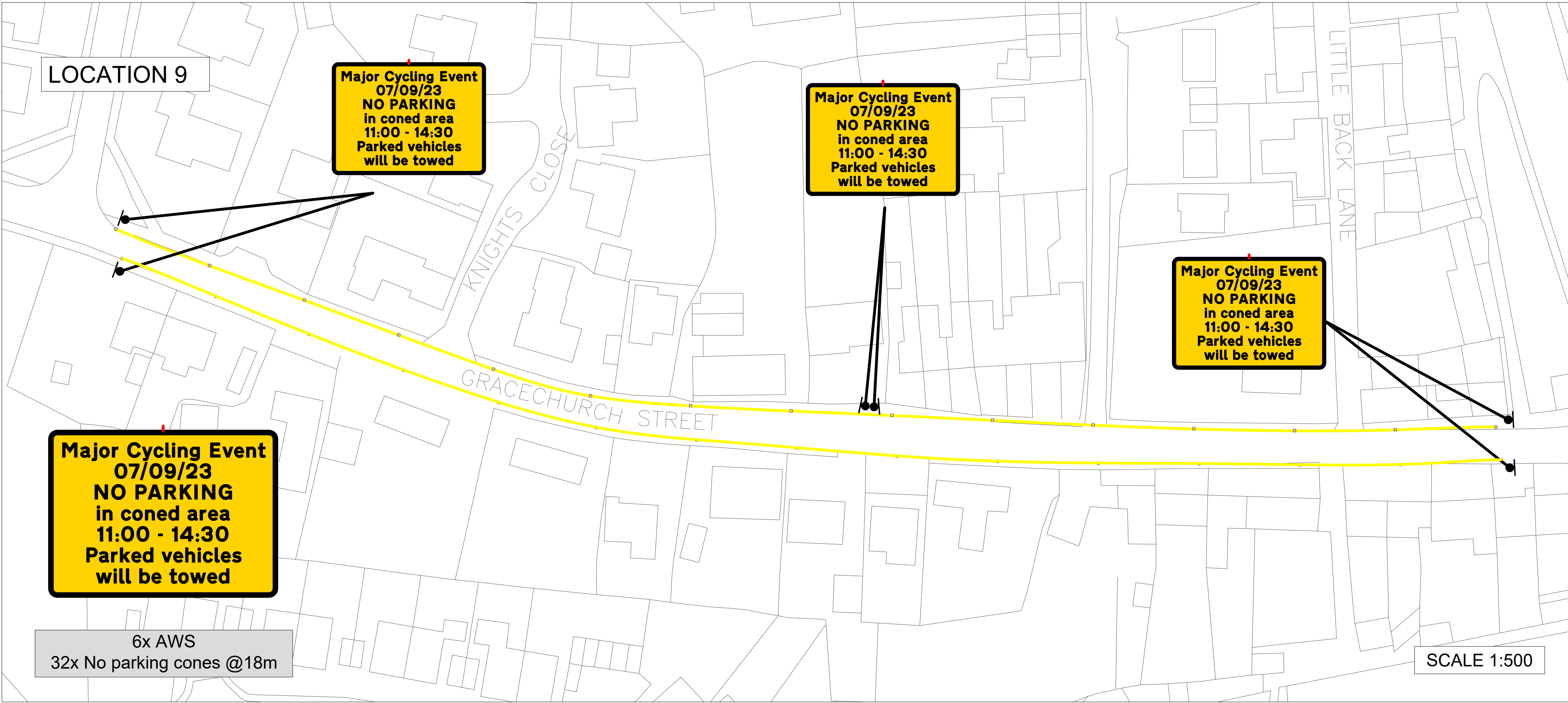
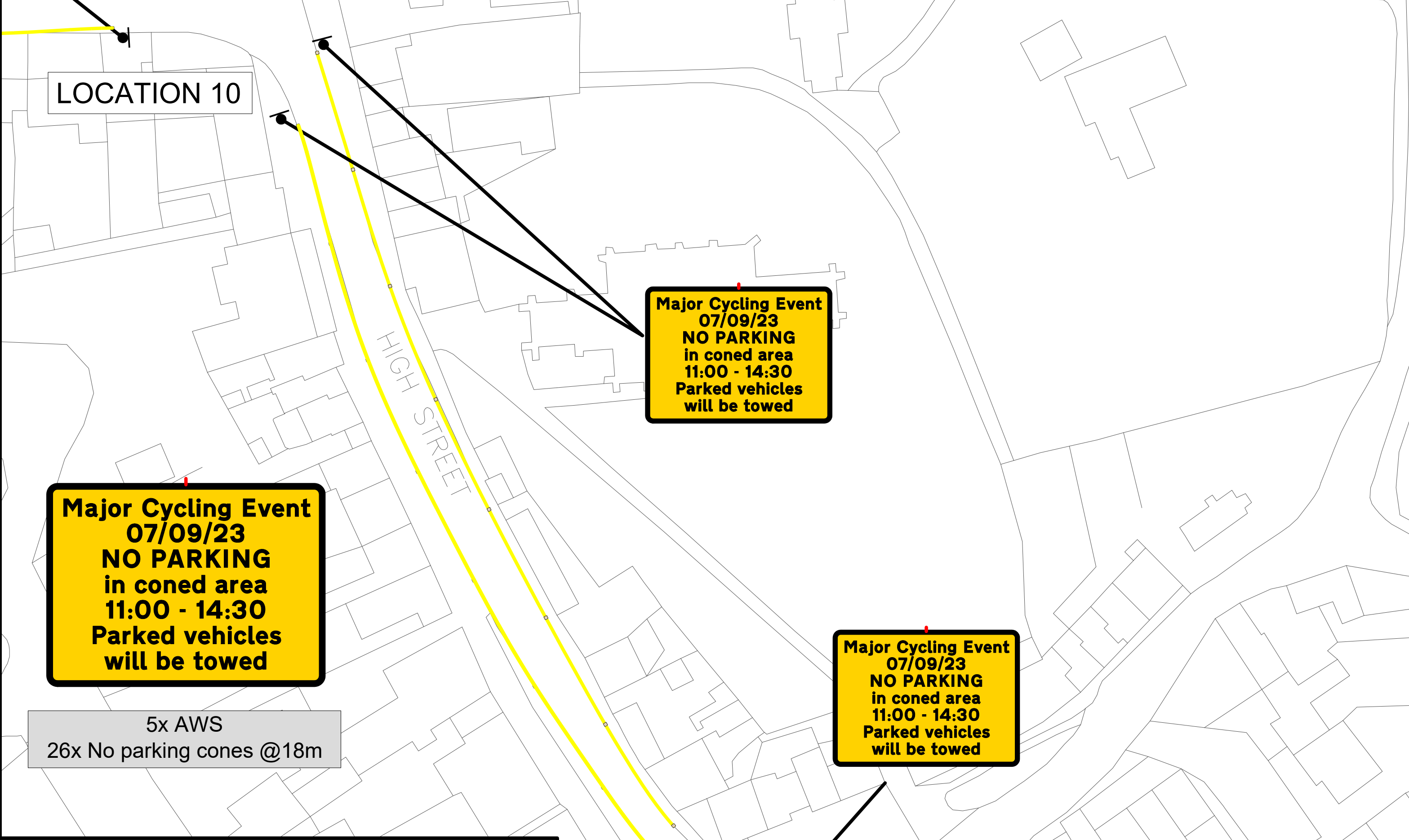
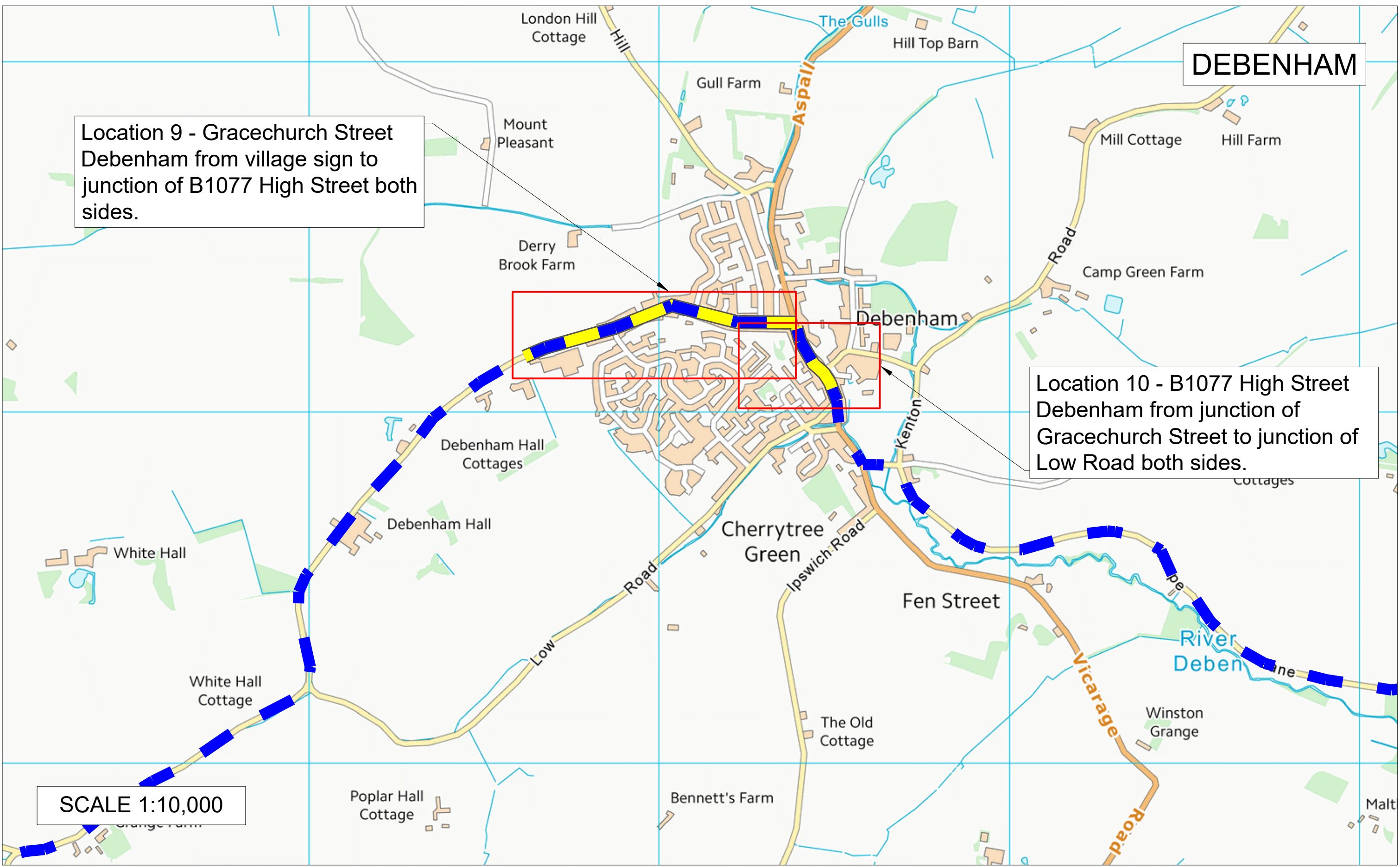
From week commencing the 21st August, parking suspension sign will be positioned in areas where the on street parking restrictions will apply and the no waiting cones will be put in position on Wednesday the 6th September. Please ensure that yours and any visitor's vehicles are removed from these areas before these restrictions apply.





Vehicles left within the areas of the restriction may be removed to an alternative location away from the route.

We apologies in advance for any inconvenience caused.

Yours sincerely

Suffolk Highways



Site location	Works activity Cycling event	Palmer House, Somersham Road Bramford, IP8 4NN (01473) 834960 email: tm@thepalmergroup.co.uk		Key		Notes		Revisions	
Stage 5 Tour of Britain 2023	Contractor Ref TBC	 Palmer Group Working with TOUR OF BRITAIN			- Race route	1. All works must conform to the Safety at Street Works and Road Works A code of Practice and abide by guidance given in the TSM Chapter 8 Parts 1 and 2 (2009) Part 3 (2020). All signs must conform with the TSRGD (2016).			
Parking restriction locations	Designed by LH				- Parking restrictions				
	Drawn by PH				- No parking cone				
	Checked by LH								
	Approved by For discussion								
Drawing number	Date of 1st issue 28/07/23								
PGTM.PH.2711-001	Scale As shown (Paper size A1)								

This drawing remains the property of Palmer Group (trading as Palmer Fencing) and may not be used in whole or in part for anything other than its intended purpose.